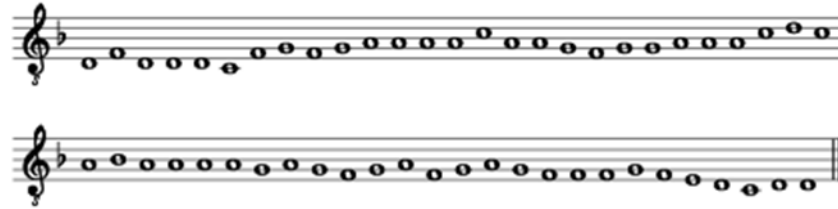


The Modular Arrangement of William Byrd's In Nomine a 5 (V), mm. 1–13



Gabriel Venegas

University of Arizona

[gabovenegas@email.arizona.edu](mailto:gabovenegas@email.arizona.edu)

Renaissance Instrumental Music (SMT/GSWP-2014)

Milwaukee, 7 November 2012


**Example 1** (Modules' thematic content and its disposition)

Treble: P----- X----- X<sup>(inv.)</sup>-- Y----- P-----

Alto: P----- X----- P----- X<sup>+5</sup>--- X<sup>(inv.)+5</sup>---

Tenor: X----- Y----- X----- P<sup>+5</sup>-----  
Z-----

Bass: P----- Z<sup>+5</sup>-----

Soprano: 

Cadences: G C F D

---









**Example 2 (Module 1)**

Treble: P----- X-----  $X^{(inv.)}$ --- Y-----

Alto: P----- X-----

Tenor: X----- Y-----  
Z-----

Bass: P-----  $Z^{+5}$ -----

Soprano:

Diagram description: A diagram showing voice part relationships. A curved arrow points from the first box (containing P, X, X, X) to the second box (containing X<sup>(inv.)</sup>, Y, X). A second curved arrow points from the first box (containing P, X) to the second box (containing X<sup>+5</sup>, X<sup>(inv.)+5</sup>, P<sup>+5</sup>). The Soprano staff shows a sequence of notes: C4, D4, E4, F4, G4, A4, B4, C5, D5, E5, F5, G5, A5, B5, C6.

**Example 3 (Module 2)**

Treble: P----- X-----  $X^{(inv.)}$ --- Y-----

Alto: P----- X-----

Tenor: X----- Y-----  
Z-----

Bass: P-----  $Z^{+5}$ -----

Soprano:

Diagram description: A diagram showing voice part relationships. A curved arrow points from the first box (containing X, X, X) to the second box (containing Y, X, X). A second curved arrow points from the first box (containing P, X) to the second box (containing X<sup>+5</sup>, X<sup>(inv.)+5</sup>, P<sup>+5</sup>). The Soprano staff shows a sequence of notes: C4, D4, E4, F4, G4, A4, B4, C5, D5, E5, F5, G5, A5, B5, C6.

**Example 4 (Module 3)**

Treble: P----- X----- X<sup>(inv.)</sup>----- Y----- P-----

Alto: P----- X----- P----- X<sup>+5</sup>----- X<sup>(inv.)+5</sup>-----

Tenor: X----- Y----- X----- P<sup>+5</sup>----- Z----- Z<sup>+5</sup>-----

Bass: P-----

Soprano:

**Example 5 (Modular arrangement and cadential structure)**

A (M1+ M3)                      B (M2)                      A' (M1+M3)

D                      G                      C                      F                      D